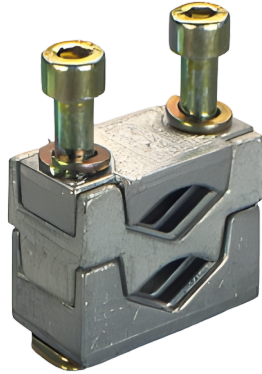


## prism terminal, double, for Cu cables (33147)



The picture may show a similar product.

### Description

Part No.: **33147 000**

prism terminal, double, for Cu cables

2x 150 mm<sup>2</sup>

size 3

### System

60Classic

Product group 09

Subgroup 51

pack size 1

EAN 4021267331474

ETIM 5.0 EC002498

ETIM 8.0 EC002498

ETIM 10.0 EC002498

# Approvals

## Standards

IEC 60947-1:2020

IEC 60947-3:2020 AC ratings only

# Technical data

## Details IEC

### Standards

IEC 60947-1:2020

IEC 60947-3:2020 AC ratings only

## Mechanical data

weight: 36.8 kg/100

## Terminal points

screw drive:	S6
wire stripping:	30 mm
min. cross-section:	150 mm <sup>2</sup>
max. cross-section:	150 mm <sup>2</sup>
rm:	150 - 150 mm <sup>2</sup>
f + AE:	150 - 150 mm <sup>2</sup>
(f + AE may not fit with max. cross-section)	
sm:	150 - 150 mm <sup>2</sup>
Md min.:	6.4 Nm
Md max.:	9.6 Nm

Not suitable for aluminium cables !

## Material properties

halogen-free: Yes

# Application notes

Not suitable for aluminium cables !  
determined by main product

<https://pim.woehner.de/EN/EN/1000047314>